



Biotechnological production of value-added carotenoids from microalgae

Kristine Wichuk, Sigurður Brynjólfsson & Weiqi Fu

To cite this article: Kristine Wichuk, Sigurður Brynjólfsson & Weiqi Fu (2014) Biotechnological production of value-added carotenoids from microalgae, Bioengineered, 5:3, 204-208, DOI: [10.4161/bioe.28720](https://doi.org/10.4161/bioe.28720)

To link to this article: <http://dx.doi.org/10.4161/bioe.28720>



Copyright © 2014 Landes Bioscience



Published online: 01 Apr 2014.



Submit your article to this journal [↗](#)



Article views: 2205



View related articles [↗](#)



View Crossmark data [↗](#)



Citing articles: 13 View citing articles [↗](#)

Biotechnological production of value-added carotenoids from microalgae

Emerging technology and prospects

Kristine Wichuk¹, Sigurður Brynjólfsson^{1,2}, and Weiqi Fu^{1*}

¹Center for Systems Biology; University of Iceland; Reykjavík, Iceland; ²Faculty of Industrial Engineering, Mechanical Engineering, and Computer Science; University of Iceland; Reykjavík, Iceland

Keywords: microalgae, carotenoid metabolism, environmental stress, *Dunaliella salina*, adaptive laboratory evolution, LED-based photobioreactors

*Correspondence to: Weiqi Fu; Email: weiqi@hi.is

Submitted: 02/28/2014; Revised: 03/25/2014;

Accepted: 03/31/2014;

Published Online: 04/01/2014

<http://dx.doi.org/10.4161/bioe.28720>

Addendum to: Fu W, Paglia G, Magnúsdóttir M, Steinarsdóttir EA, Gudmundsson S, Pálsson BØ, Andrésson ÓS, Brynjólfsson S. Effects of abiotic stressors on lutein production in the green microalga *Dunaliella salina*. *Microb Cell Fact* 2014; 13:3; PMID:24397433; <http://dx.doi.org/10.1186/1475-2859-13-3>

We recently evaluated the relationship between abiotic environmental stresses and lutein biosynthesis in the green microalga *Dunaliella salina* and suggested a rational design of stress-driven adaptive evolution experiments for carotenoids production in microalgae. Here, we summarize our recent findings regarding the biotechnological production of carotenoids from microalgae and outline emerging technology in this field. Carotenoid metabolic pathways are characterized in several representative algal species as they pave the way for biotechnology development. The adaptive evolution strategy is highlighted in connection with enhanced growth rate and carotenoid metabolism. In addition, available genetic modification tools are described, with emphasis on model species. A brief discussion on the role of lights as limiting factors in carotenoid production in microalgae is also included. Overall, our analysis suggests that light-driven metabolism and the photosynthetic efficiency of microalgae in photobioreactors are the main bottlenecks in enhancing biotechnological potential of carotenoid production from microalgae.

Global climate change and environmental issues provide an impetus for a transition to a bio-based economy with a low carbon footprint. Microalgae have been considered as promising feedstocks for applications in food and feed production,

bioactive pharmaceuticals, and biofuels,¹⁻³ as they possess several unique properties. Microalgae as primary producers are a major part of phytoplankton community, found in almost all marine and fresh water ecosystems. They are photosynthetic eukaryotes capable of fixing CO₂ into biomass with a higher efficiency of photosynthesis than vascular plants.⁴ They are also highly diverse; for example, diatoms are evolutionarily different from green algae.⁵ Many species of microalgae are easy to cultivate with inexpensive media and they don't compete directly with agricultural crops for water or land. There are also genetic modification tools⁶ available that make it possible to engineer microalgae for the efficient production of desired products. In addition, microalgae are a rich source of natural value-added products, such as carotenoids and unsaturated fatty acids. There is a high demand for naturally synthesized carotenoids such as β-carotene and lutein in global markets.⁷ However, the productivity of carotenoids in microalgae has historically been low, and the economic viability of algal biotechnology is limited by processing costs and photosynthetic efficiency, as well as by productivity in algal cultures.

We recently evaluated the relationship between abiotic environmental stresses and lutein biosynthesis in the green microalga *Dunaliella salina*.⁸ That study presented an assessment of how different environmental stressors and their interactions influenced lutein accumulation. A systems

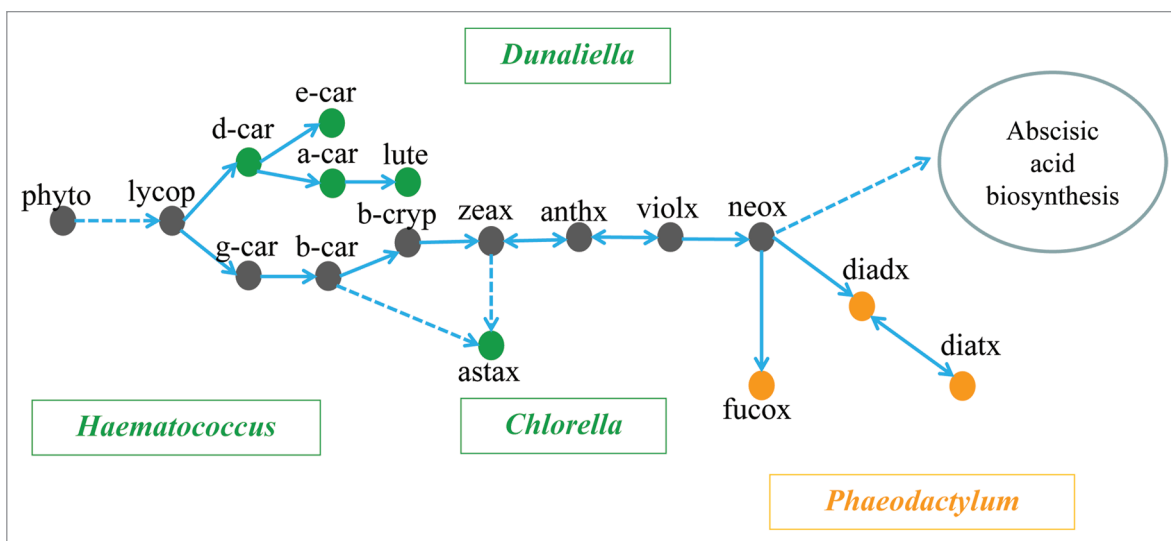


Figure 1. Overview of the carotenoid biosynthetic pathway in green microalgae and diatoms. Arrows indicate directions of the reactions. Dashed lines and solid lines represent multiple and single steps of enzymatic reactions, respectively. Green and orange dots refer to carotenoid species present only in green algae and only in diatoms, respectively, while gray dots show carotenoids which are present in both green algae and diatoms. Names of green microalgae are shown in green boxes, while the diatom *Phaeodactylum* is shown in an orange box. Abbreviations: phyto, phytoene; lycop, lycopene; d-car, δ -carotene; e-car, ϵ -carotene; a-car, α -carotene; lute, lutein; g-car, γ -carotene; b-car, β -carotene; b-cryp, β -cryptoxanthin; zeax, zeaxanthin; anthx, antheraxanthin; violx, violaxanthin; neox, neoxanthin; astax, astaxanthin; diadx, diadinoxanthin; diatx, diatoxanthin; fucos, fucoxanthin.

analysis of stress conditions revealed that the adaptability of *Dunaliella* cells varied significantly in response to different environmental changes. Therefore, a guideline was proposed for stress-driven adaptive evolution experiments.⁸ Rational design of adaptive evolution experiments may be an effective approach for optimizing the production of carotenoids. However, it is also important to understand carotenoid metabolism and characterize the relevant rate-limiting steps prior to the rational design. The characterization of metabolic pathways can also pave the way for further design of algal cell factories through metabolic engineering approaches. The current study summarizes the major pathways of carotenoid metabolism in several representative species of green algae and diatoms, i.e., *Chlorella vulgaris*, *D. salina*, *Haematococcus pluvialis*, and *Phaeodactylum tricornutum*. Recent efforts in genetic engineering, as well as adaptive evolution for overproduction of carotenoids, are briefly introduced and the biotechnological implications of these studies are discussed.

Carotenoids play an essential role in the light harvesting complex of microalgae and higher plants. Carotenoid biosynthesis is complex, as it is coordinated with the biogenesis of chlorophylls, the

photosynthetic apparatus and electron transport.^{9,10} The first step in the carotenoid biosynthetic pathway is the condensation of two molecules of geranylgeranyl diphosphate (GGPP) to produce C40 phytoene, a common precursor of other carotenoids in microalgae.¹¹ The metabolic pathways of carotenoids in green algae and diatoms are shown in Figure 1. Major carotenoids are illustrated in several representative microalgae. All of these microalgae are either model species or industrially important. The green algae *Chlorella*, *Dunaliella*, and *Haematococcus* all belong to the phylum Chlorophyta, while the diatom *Phaeodactylum* is in the phylum Heterokontophyta.¹² Some carotenoids, such as diadinoxanthin, diatoxanthin, and fucoxanthin, are only present in diatoms, while others, such as δ -carotene, ϵ -carotene, α -carotene, lutein, and astaxanthin, are only produced in green algae (Fig. 1). Some algal species may accumulate large amounts of specialty carotenoids. For instance, *D. salina* can overproduce β -carotene and lutein under stress conditions and *H. pluvialis* is a good producer of astaxanthin.¹³ As microalgae are able to synthesize very diverse carotenoid species, characterization of metabolic pathways is an important step prior to engineering algal strains for industrial applications.

LED-based photobioreactor (PBR) systems¹⁹ can be used to cultivate algae intensively at high densities. However, photolimitation due to mutual shading is ubiquitous in all sizes of PBRs during scale-up. The radial mixing time²⁶ calculated for a bubble column PBR¹⁹ with a radius of 2.0 cm and a length of 30.0 cm can be as long as 30 s, and increases as PBR size increases (Fig. 2). The additional light-dark cycle caused by radial mixing results in limited exposure of algae to lights and reduced growth rate. In the meantime, oversaturated light intensity provided on the surface of PBRs may lead to photodamage to algal cells which move into these areas. Photolimitation and photoinhibition, which exist simultaneously in tubular PBRs, largely limit the biomass yield as well as photosynthetic efficiency in algal culture, thereby reducing the overall productivity of desired carotenoids. Efforts are needed to optimize the light harvesting system of microalgae, in order to improve the biomass yields as well as photosynthetic efficiencies.

It is well known that organisms adapt to environmental changes through the fixation of mutations that enhance reproductive success.¹⁴ Long-term adaptation on an unusual and poor carbon source for bacteria would select for mutants with optimal

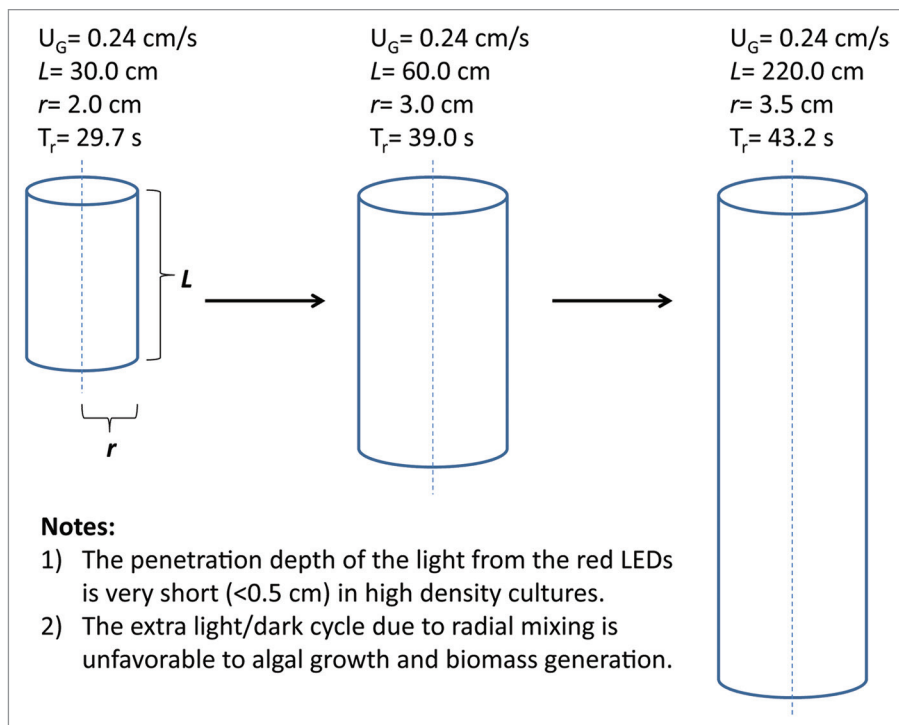


Figure 2. Illustration of the effect of bubble column PBR size on radial mixing times. T_r represents radial mixing time, calculated according to Rubio et al.²⁶ U_G refers to the superficial velocity of input gases. L and r are the length and the radius of the PBR, respectively.

biomass yields.^{15,16} Adaptive laboratory evolution (ALE) has been widely utilized as a tool for developing new biological and phenotypic functions and exploring strain improvement in synthetic biology for bacteria.¹⁷ Adaptation studies on *Dunaliella* date back to the 1970s;¹⁸ however, adaptive evolution is still a novel approach for improving strain performance in algal biotechnology, as evolutionary dynamics is more complex in photosynthetic eukaryotes than in bacteria. With the aid of LED technology, the effects of light quality (e.g., red light with or without blue light) can be addressed under defined LED illumination. Rational design of adaptive evolution experiments can therefore be performed under light stress conditions. In a previous study, an adaptive evolution approach was developed to evolve a strain of the microalga *C. vulgaris* with an improved growth rate and biomass yield under light stress conditions.¹⁹ We also found that light quality was critical for *D. salina* in response to light stress, and the application of adaptive evolution yielded strains with increased accumulation of carotenoids under combined blue and red

lights.²⁰ The photosynthetic efficiencies and biomass productivities for three different algal species, including those discussed above, are summarized in Table 1. It can be seen that improved biomass productivity, biomass yield, and photosynthetic efficiency was achieved for both *D. salina* and *C. vulgaris* by using ALE and by adjusting the amount of illumination and/or the wavelengths of incident LED light. The data in Table 2 show that the light quality, i.e., the presence of blue light, helped to enhance the accumulation of major carotenoids in microalgae, specifically, lutein and β -carotene in *D. salina* after ALE and fucoxanthin in *P. tricornutum* prior to ALE. It is hypothesized that adaptive evolution will also improve the growth performance of *P. tricornutum*, as was observed for *D. salina* and *C. vulgaris* (this study is ongoing). It has been reported elsewhere that growth performance, as well as lipid productivity, of the green microalga *Chlamydomonas reinhardtii* was also enhanced by adaptive evolution.²¹ These findings demonstrate that adaptive evolution can be an effective strategy for selecting economically valuable traits in

microalgae. Understanding how laboratory selection drives algal evolution is a key challenge in evolutionary engineering. Further study should be undertaken in order to gain a better understanding of adaptation mechanisms and the interactions between genetic and environmental variables. Genome resequencing and comparative genomics are needed to decipher the genetically inheritable adaptation of algal species to specific environmental settings for rapid selection and evolution.

Metabolic engineering and genetic engineering are also likely to play an important role in developing microalgae for improved productivity of a desired product through the direct manipulation of metabolic pathways. Genetic modification tools have been developed for some algal species. A glass bead transformation system for *D. salina* has been established and a duplicated carbonic anhydrase 1 promoter has been used for stable nuclear transformation.²² An RNA interference approach has also been applied to inhibit gene expression in *D. salina*.²³ Molecular biology tools for gene manipulation have also been developed in diatoms.²⁴ Microprojectile bombardment and electroporation methods have been applied successfully to introduce foreign DNA into *Phaeodactylum* cells.^{24,25} The shuttle vector pPha-NR with inducible nitrate reductase promoter system (GenBank: JN180663) has been constructed for controllable expression of foreign genes. Although the tools for algal transformation are still limited and high efficiency methods would be desirable, it is feasible to engineer certain algal species of interest for valuable carotenoid production in industry. The application of metabolic engineering and genetic engineering has shown promise in producing carotenoids in microalgae,²⁷ as well as in yeast.²⁸ However, due to the complexity of carotenoid metabolic pathways, carotenoid yields in eukaryotic cells with DNA recombination technology have been much lower than the yields achieved by other methods. For example, optimizing cultivation systems and developing an appropriate two-stage culture mode,^{29,30} as shown in Table 3, achieved higher production yields than the DNA recombination method. In the meantime, it is likely that algal species have been evolved

Table 1. Photosynthetic efficiencies of microalgae in LED-based PBRs

Algae species		LED illumination ($\mu\text{E}/\text{m}^2/\text{s}$)	Biomass productivity (gDCW/L/day)	Biomass yield (g/E)	Photosynthetic efficiency* (%)
<i>P. tricornutum</i> [#]	Prior to ALE	204 (100% red)	0.32 ± 0.02	0.18 ± 0.01	2.0
		204 (50% red and 50% blue)	0.64 ± 0.02	0.36 ± 0.01	3.3
<i>D. salina</i> ²⁰	After ALE	170 (100% red)	0.40 ± 0.01	0.27 ± 0.01	3.0
	Prior to ALE		0.22 ± 0.01	0.15 ± 0.01	1.7
	After ALE	170 (75% red and 25% blue)	0.48 ± 0.02	0.33 ± 0.01	3.3
	Prior to ALE		0.40 ± 0.01	0.27 ± 0.01	2.7
<i>C. vulgaris</i> ¹⁹	After ALE	300 (100% red)	2.11 ± 0.13	0.81 ± 0.05	9.0
	Prior to ALE	255 (100% red)	0.71 ± 0.05	0.32 ± 0.02	3.6

*A biomass combustion energy of 20.15 kJ is assumed; [#] model species (CCAP 1055/1) in this work.

Table 2. Quantification of major carotenoids in microalgae under different light conditions

Algae species	LED illumination ($\mu\text{E}/\text{m}^2/\text{s}$)	Carotenoid content in cells (mg/g DCW)		
		Lutein	β -Carotene	Fucoxanthin
<i>P. tricornutum</i> [#]	204 (100% red)	Not applicable	2.3 ± 0.4	8.0 ± 1.6
	204 (50% red and 50% blue)	Not applicable	1.0 ± 0.3	12.2 ± 1.1
<i>D. salina</i> ²⁰	170 (100% red)	4.0 ± 0.4	2.6 ± 0.2	Not applicable
	170 (75% red and 25% blue)*	7.9 ± 0.7	9.5 ± 0.5	Not applicable

[#] Model species (CCAP 1055/1) in this work, prior to ALE; * the strain after ALE was evaluated under the light conditions.

Table 3. Production of carotenoids with and without genetically modified microorganisms

Strain species	Cultivation method	Genetic engineering	Carotenoid species	Content in cells (mg/gDCW)	Productivity (mg/L/day)
<i>C. zofingiensis</i> ²⁷	Two-stage culture	Yes	Astaxanthin	4.6	ND
<i>Saccharomyces cerevisiae</i> ²⁸	Batch culture	Yes	β -Carotene	5.9	ND
<i>D. bardawil</i> ²⁹	Two-stage culture	No	β -Carotene	80	ND
<i>H. pluvialis</i> ³⁰	Two-stage culture	No	Astaxanthin	40	11.5

ND, not determined.

to accumulate certain carotenoids during natural evolution.²⁰ It is recommended that future research focuses on the combination of new metabolic engineering strategies, strain selection, bioreactor design and cultivation optimization to achieve microalgal production of carotenoids at low costs, high yields and in an environmentally friendly manner.

In summary, engineering microalgae for carotenoid production with the ultimate aim of industrial applications should place emphasis not only on enhancing the accumulation of desired carotenoids, but also on optimizing the light harvesting system of microalgae. It should be possible to significantly improve the overall productivity in this way.

Disclosure of Potential Conflicts of Interest

The authors declare that they have no conflicts of interest.

Acknowledgments

This work was supported by the Icelandic Technology Development Fund and the Geothermal Research Group (GEORG) Fund.

References

- Lee SH, Kang HJ, Lee HJ, Kang MH, Park YK. Six-week supplementation with *Chlorella* has favorable impact on antioxidant status in Korean male smokers. *Nutrition* 2010; 26:175-83; PMID:19660910; <http://dx.doi.org/10.1016/j.nut.2009.03.010>
- Pulz O, Gross W. Valuable products from biotechnology of microalgae. *Appl Microbiol Biotechnol* 2004; 65:635-48; PMID:15300417; <http://dx.doi.org/10.1007/s00253-004-1647-x>
- Wijffels RH, Barbosa MJ. An outlook on microalgal biofuels. *Science* 2010; 329:796-9; PMID:20705853; <http://dx.doi.org/10.1126/science.1189003>
- Dismukes GC, Carrieri D, Bennette N, Ananyev GM, Posewitz MC. Aquatic phototrophs: efficient alternatives to land-based crops for biofuels. *Curr Opin Biotechnol* 2008; 19:235-40; PMID:18539450; <http://dx.doi.org/10.1016/j.copbio.2008.05.007>
- Armbrust EV. The life of diatoms in the world's oceans. *Nature* 2009; 459:185-92; PMID:19444204; <http://dx.doi.org/10.1038/nature08057>
- Radakovits R, Jinkerson RE, Darzins A, Posewitz MC. Genetic engineering of algae for enhanced biofuel production. *Eukaryot Cell* 2010; 9:486-501; PMID:20139239; <http://dx.doi.org/10.1128/EC.00364-09>
- Cordero BF, Obratsova I, Couso I, Leon R, Vargas MA, Rodriguez H. Enhancement of lutein production in *Chlorella sorokiniana* (Chlorophyta) by improvement of culture conditions and random mutagenesis. *Mar Drugs* 2011; 9:1607-24; PMID:22131961; <http://dx.doi.org/10.3390/md9091607>
- Fu W, Paglia G, Magnúsdóttir M, Steinarsdóttir EA, Gudmundsson S, Pálsson BO, Andrésón OS, Brynjólfsson S. Effects of abiotic stressors on lutein production in the green microalga *Dunaliella salina*. *Microb Cell Fact* 2014; 13:3; PMID:24397433; <http://dx.doi.org/10.1186/1475-2859-13-3>
- Bohne F, Linden H. Regulation of carotenoid biosynthesis genes in response to light in *Chlamydomonas reinhardtii*. *Biochim Biophys Acta* 2002; 1579:26-34; PMID:12401216; [http://dx.doi.org/10.1016/S0167-4781\(02\)00500-6](http://dx.doi.org/10.1016/S0167-4781(02)00500-6)
- Cardol P, Forti G, Finazzi G. Regulation of electron transport in microalgae. *Biochim Biophys Acta* 2011; 1807:912-8; PMID:21167125; <http://dx.doi.org/10.1016/j.bbabi.2010.12.004>
- Takaichi S. Carotenoids in algae: distributions, biosyntheses and functions. *Mar Drugs* 2011; 9:1101-18; PMID:21747749; <http://dx.doi.org/10.3390/md9061101>
- Hildebrand M, Davis AK, Smith SR, Traller JC, Abbriano R. The place of diatoms in the biofuels industry. *Biofuels* 2012; 3:221-40; <http://dx.doi.org/10.4155/bfs.11.157>
- Katsuda T, Lababpour A, Shimahara K, Katoh S. Astaxanthin production by *Haematococcus pluvialis* under illumination with LEDs. *Enzyme Microb Technol* 2004; 35:81-6; <http://dx.doi.org/10.1016/j.enzmictec.2004.03.016>
- Babu MM, Aravind L. Adaptive evolution by optimizing expression levels in different environments. *Trends Microbiol* 2006; 14:11-4; PMID:16356718; <http://dx.doi.org/10.1016/j.tim.2005.11.005>
- Ibarra RU, Edwards JS, Palsson BO. *Escherichia coli* K-12 undergoes adaptive evolution to achieve in silico predicted optimal growth. *Nature* 2002; 420:186-9; PMID:12432395; <http://dx.doi.org/10.1038/nature01149>
- Teusink B, Wiersma A, Jacobs L, Notebaart RA, Smid EJ. Understanding the adaptive growth strategy of *Lactobacillus plantarum* by in silico optimisation. *PLoS Comput Biol* 2009; 5:e1000410; PMID:19521528; <http://dx.doi.org/10.1371/journal.pcbi.1000410>
- Pálsson BØ. Adaptive laboratory evolution. *Microbe* 2011; 6:69-74
- Ben-Amotz A. Adaptation of the unicellular alga *Dunaliella parva* to a saline environment. *J Phycol* 1975; 11:50-4
- Fu W, Gudmundsson O, Feist AM, Herjólfsson G, Brynjólfsson S, Pálsson BØ. Maximizing biomass productivity and cell density of *Chlorella vulgaris* by using light-emitting diode-based photobioreactor. *J Biotechnol* 2012; 161:242-9; PMID:22796827; <http://dx.doi.org/10.1016/j.jbiotec.2012.07.004>
- Fu W, Gudmundsson O, Paglia G, Herjólfsson G, Andrésón OS, Pálsson BØ, Brynjólfsson S. Enhancement of carotenoid biosynthesis in the green microalga *Dunaliella salina* with light-emitting diodes and adaptive laboratory evolution. *Appl Microbiol Biotechnol* 2013; 97:2395-403; PMID:23095941; <http://dx.doi.org/10.1007/s00253-012-4502-5>
- Yu S, Zhao Q, Miao X, Shi J. Enhancement of lipid production in low-starch mutants *Chlamydomonas reinhardtii* by adaptive laboratory evolution. *Bioresour Technol* 2013; 147:499-507; PMID:24012738; <http://dx.doi.org/10.1016/j.biortech.2013.08.069>
- Feng S, Xue L, Liu H, Lu P. Improvement of efficiency of genetic transformation for *Dunaliella salina* by glass beads method. *Mol Biol Rep* 2009; 36:1433-9; PMID:18792804; <http://dx.doi.org/10.1007/s11033-008-9333-1>
- Sun G, Zhang X, Sui Z, Mao Y. Inhibition of *pds* gene expression via the RNA interference approach in *Dunaliella salina* (Chlorophyta). *Mar Biotechnol* (NY) 2008; 10:219-26; PMID:18204953; <http://dx.doi.org/10.1007/s10126-007-9056-7>
- Hempel F, Maier UG. An engineered diatom acting like a plasma cell secreting human IgG antibodies with high efficiency. *Microb Cell Fact* 2012; 11:126; PMID:22970838; <http://dx.doi.org/10.1186/1475-2859-11-126>
- Miyahara M, Aoi M, Inoue-Kashino N, Kashino Y, Ifuku K. Highly efficient transformation of the diatom *Phaeodactylum tricornutum* by multi-pulse electroporation. *Biosci Biotechnol Biochem* 2013; 77:874-6; PMID:23563551
- Rubio FC, Miron AS, Garcia MCC, Camacho FG, Molina-Grima E. Mixing in bubble columns: a new approach for characterizing dispersion coefficients. *Chem Eng Sci* 2004; 69:4369-76; <http://dx.doi.org/10.1016/j.ces.2004.06.037>
- Verwaal R, Wang J, Meijnen JP, Visser H, Sandmann G, van den Berg JA, van Ooyen AJ. High-level production of beta-carotene in *Saccharomyces cerevisiae* by successive transformation with carotenogenic genes from *Xanthophyllomyces dendrorhous*. *Appl Environ Microbiol* 2007; 73:4342-50; PMID:17496128; <http://dx.doi.org/10.1128/AEM.02759-06>
- Liu J, Sun Z, Gerken H, Huang J, Jiang Y, Chen F. Genetic engineering of the green alga *Chlorella zofingiensis*: a modified norflurazon-resistant phytoene desaturase gene as a dominant selectable marker. *Appl Microbiol Biotechnol* 2014; PMID:24584513
- Ben-Amotz A, Katz A, Avron M. Accumulation of beta-carotene in halotolerant algae: Purification and characterization of beta-carotene-rich globules from *Dunaliella bardawil* (Chlorophyceae). *J Phycol* 1982; 18:529-37; <http://dx.doi.org/10.1111/j.1529-8817.1982.tb03219.x>
- Aflalo C, Meshulam Y, Zarka A, Boussiba S. On the relative efficiency of two- vs. one-stage production of astaxanthin by the green alga *Haematococcus pluvialis*. *Biotechnol Bioeng* 2007; 98:300-5; PMID:17318905; <http://dx.doi.org/10.1002/bit.21391>